

Data Administrator

Cost control and data security
with user access and cost centres



Multi-functional print systems support the introduction of new functions and therefore create value. However, these increased options also mean increased usage. Add confidential data to the mix, and you have a situation where usage control is required. The Data Administrator offers a convenient way to set user access and cost centres for the respective DEVELOP system at a PC.

What makes the Data Administrator so special?

The Data Administrator offers a convenient way to set the user access and cost centres for the respective DEVELOP system. However, its functions are not just limited to restricting utilisation of the system and certain functions (printing, copying, scanning, faxing and BOX). In addition, it is also possible to define quantity restrictions for individual users or projects. User addresses can be read in from tables or can be imported directly from an existing address database. Public users can be allowed to perform b/w copying only without assignment of an access code. The Data Administrator standard software is suitable for all ineo systems with a printing speed of at least 25 pages per minute and is available on the user/driver DVD and at www.develop.eu.

What the Data Administrator offers

- > Controlled user access with user name and password
- > »Public users« without registered access can be restricted to b/w use
- > Combining of individual users to form user groups
- > Cost centres for controlled ineo use for departments, customers, clients, periods and projects
- > Controllable functions: printing, copying, scanning, faxing, BOX
- > Registration in the printer driver or on the copier display and in the TWAIN driver
- > Copying of access settings to other ineos
- > Convenient release in the printer driver and on the copier display
- > Import of user/account lists from tables and from other MFPs
- > Read-out of counter readings for users and cost centres
- > Time-based restriction of general access
- > Additional functions: Copy Protection Utility, Font Manager Utility, energy-saving mode, address book management, network settings

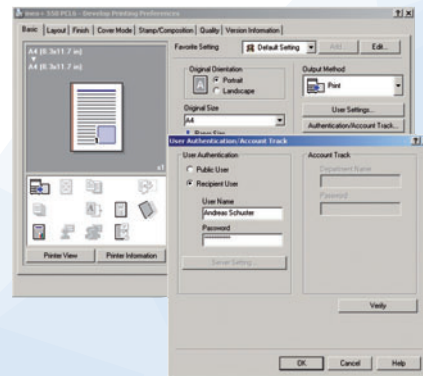
Who uses the Data Administrator?

The Data Administrator is used primarily in public authorities, schools and universities as well as in corporate departments in order to assign access rights selectively and precisely control costs for document creation.

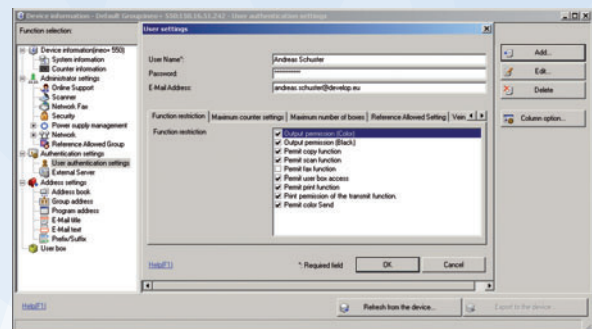
How you benefit

- > Controlled user access for limiting print costs
- > Security measures for the protection of confidential data
- > Clear evaluation of user printing behaviour

Registration of the user in the printer driver



Registration of the user



DEVELOP

Konica Minolta Business Solutions Europe GmbH
Europaallee 17 30855 Langenhagen Germany Phone +49 511 7404-0 www.develop.eu

All technical data correspond to knowledge available at the time of going to print. Konica Minolta reserves the right to make technical alterations.

DEVELOP and ineo are registered trademarks/product titles owned by Konica Minolta Business Solutions Europe GmbH. All other brand or product names are registered trademarks or product titles of their respective manufacturers. Konica Minolta does not accept any liability or guarantee for these products.

October 2012